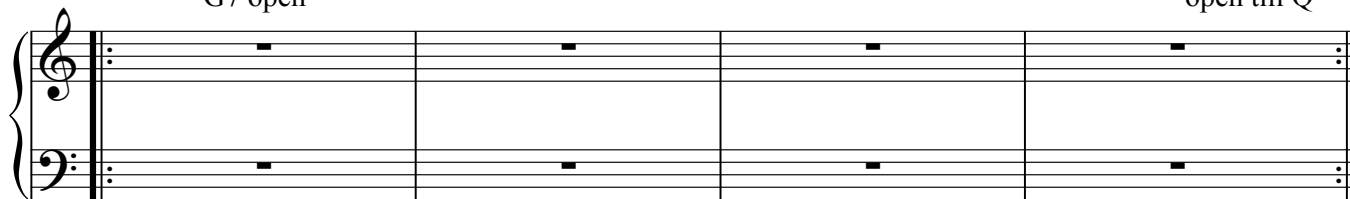


FRIED CHICKEN MODULATION LIVE Eb

A

G7 open

open till Q

**B**

play 4 times (open in solos)

5

**C**

5 on 3

play 4 times in head and solos

8

**D**

play 4 times open in solos

13

**E**

play 4 times in head and solos

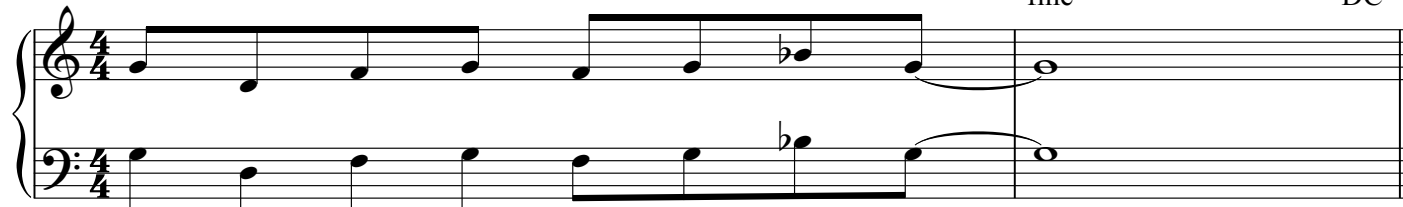
16

**F**

fine

DC

23



SOLO OVER WHOLE PAGE NO OUT HEAD SONG FINISHES AFTER LAST SOLO AT F